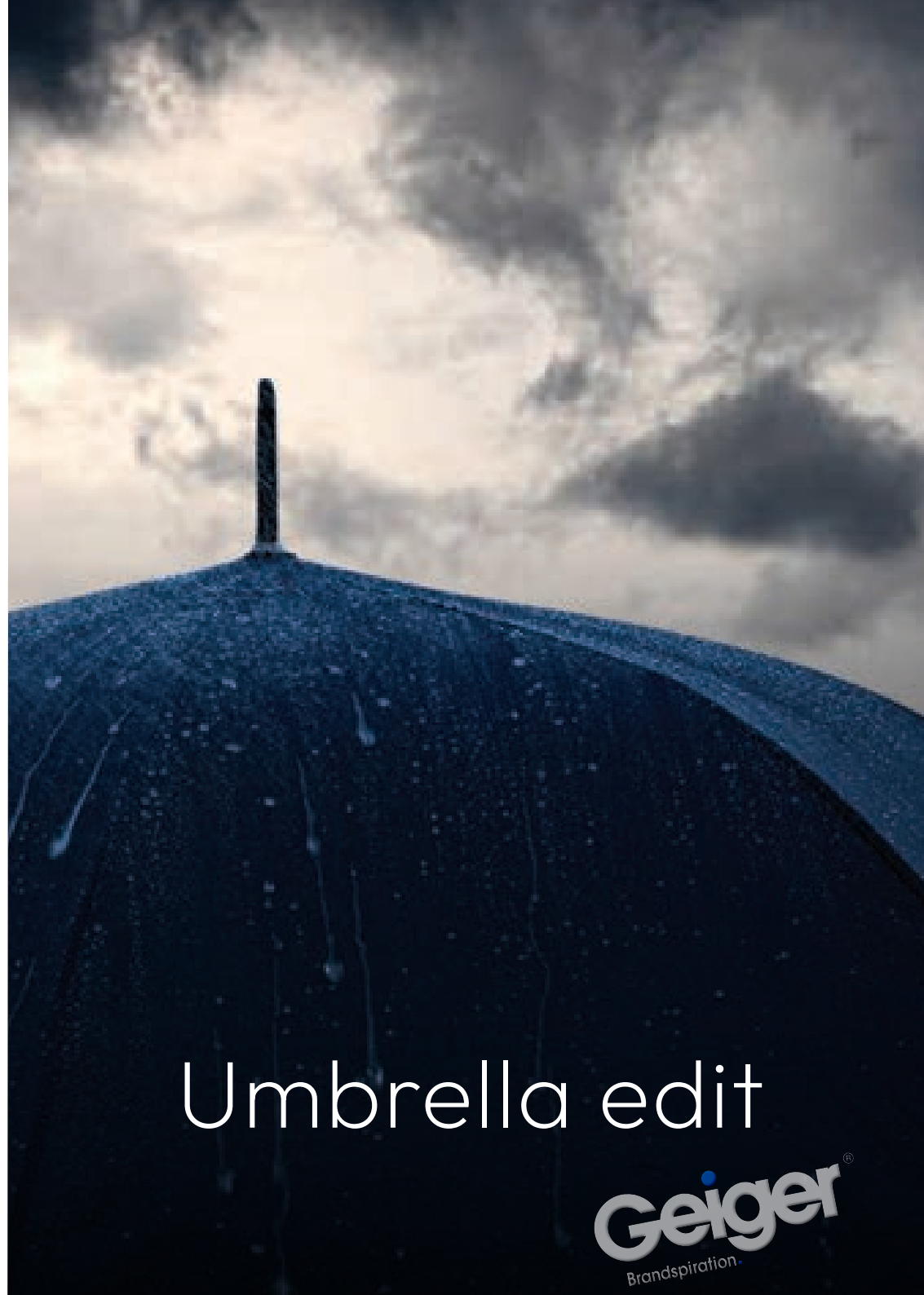


**IMPACT**

**Geiger**<sup>®</sup>  
Brandspiration.

# SUSTAINABLE MERCHANDISE IDEAS FOR YOUR BRAND

A collection of products made from sustainable materials where 2% of every sale is donated to water.org



Umbrella edit

**Geiger**<sup>®</sup>  
Brandspiration.

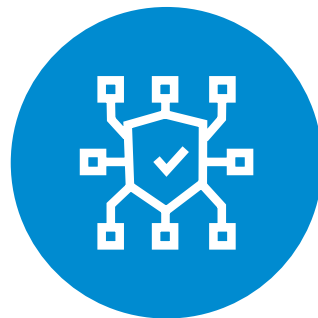
# IMPACT

## THE TRUE STORY OF RECYCLED MATERIALS.

With the IMPACT collection we want to end greenwashing and tell the true story about sustainability. We believe that traceability and sustainability are deeply connected. As market pioneers we are paving the way for the rest of the industry.



100% traceable  
recycled materials



Verified by  
blockchain technology



Saves water



2% donation to  
water.org



# AWARE

## WE ARE ALL RESPONSIBLE FOR THE ECOLOGICAL FOOTPRINT OF THE PRODUCTS WE USE EVERYDAY.

Aware™ wants to build trust in the textile industry with an instant traceable sustainable textile that's telling the truth about its origin and impact. The next generation wants us to prove that we are reliable and trustworthy, that we walk the walk. No greenwashing, but transparency and honesty.

**9.800**

litres of water

is saved per 1 kilo of  
AWARE™ recycled cotton vs.  
conventional cotton

**1.000.000**

plastic water bottles

are prevented from flowing into the  
oceans per 10,000 kilo of AWARE™  
recycled polyester

**99,3%**

less water

is used producing 1 kilo  
AWARE™ recycled polyester  
vs. virgin polyester



photo credit to Water.org

## THE WATER CRISIS = A HEALTH CRISIS

Nearly 1 million people die each year from water, sanitation and hygiene-related diseases which could be reduced with access to safe water or sanitation.

Every 2 minutes a child dies from a water-related disease. Access to safe water and sanitation contributes to improved health and helps prevent the spread of infectious disease. It means reduced child and maternal mortality rates. It means reduced physical injury from constant lifting and carrying heavy loads of water.

**2% of proceeds of each  
Impact product sold will be donated to:**



Source: Water.org



P850.56 ○3 ●4 ●5

## 20.5" IMPACT AWARE™ RPET 190T PONGEE MINI UMBRELLA

No greenwashing, but telling a true story about sustainability! This Impact umbrella is made of 190T RPET pongee with AWARE™ tracer. With AWARE™, the use of genuine recycled fabric materials and water reduction impact claims are guaranteed, by using the AWARE disruptive physical tracer and blockchain technology. Save water and use genuine recycled fabrics. With the focus on water 2% of proceeds of each Impact product sold will be donated to Water.org. This portable 3 section manual open mini umbrella is the perfect size to keep in your purse or car for a weather emergency. Metal frame, fibreglass ribs with PP handle. Stormproof. This umbrella canopy has saved 4,2 litres of water, is made of 7,1 PET bottles (500ml). Water savings are based on figures when compared to conventional fibre. This calculated indication is based on reliable LCA data as published by Textile Exchange in their Material Snapshots 2016.

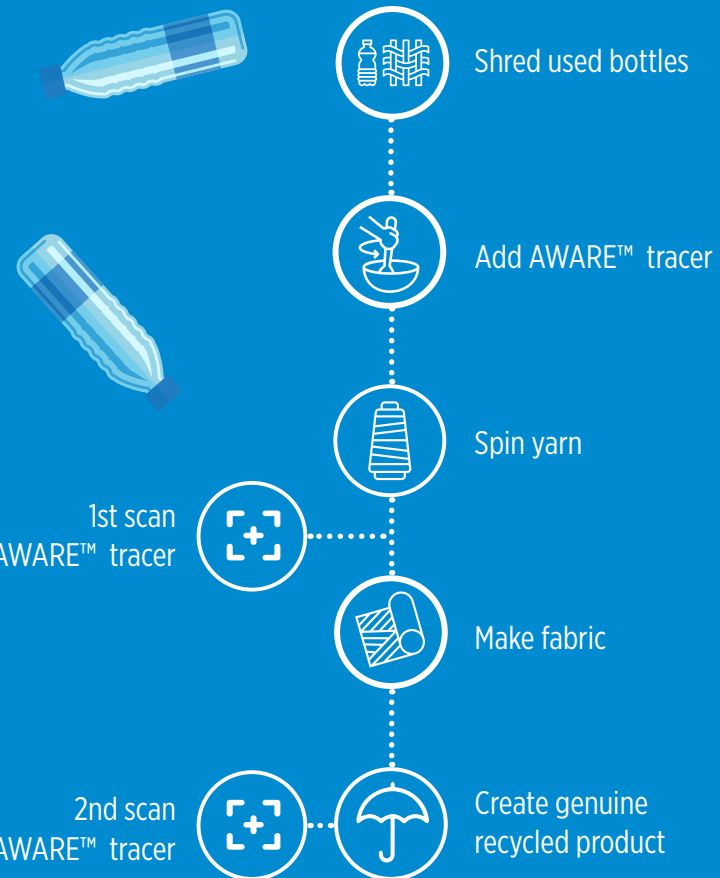
WATER SAVED

4,2 L.



# rPET

## From plastic to fabric



All of these products can be branded with your logo!



P850.54 ●1 ●2 ●5

## 20.5" IMPACT AWARE™ RPET 190T PONGEE MINI REFLECTIVE UMBRELLA

No greenwashing, but telling a true story about sustainability! This Impact umbrella is made with 190T RPET pongee with AWARE™ tracer. With AWARE™, the use of genuine recycled fabric materials and water reduction impact claims are guaranteed, by using the AWARE disruptive physical tracer and blockchain technology. Save water and use genuine recycled fabrics. With the focus on water 2% of proceeds of each Impact product sold will be donated to Water.org. This portable 3 section manual open mini umbrella is the perfect size to keep in your purse or car for a weather emergency. Stay visible at night thanks to the reflective strip. Metal frame, metal ribs with PP handle. This umbrella canopy has saved 4,5 litres of water and is made of 7,6 PET bottles (500ml). Water savings are based on figures when compared to conventional fibre. This calculated indication is based on reliable LCA data as published by Textile Exchange in their Material Snapshots 2016.

WATER SAVED  
**4,5 L.**



P850.55 ●2 ●5

## 21" IMPACT AWARE™ RPET 190T PONGEE DUAL COLOUR MINI UMBRELLA

No greenwashing, but telling a true story about sustainability! This Impact umbrella is made with 190T RPET pongee with AWARE™ tracer. With AWARE™, the use of genuine recycled fabric materials and water reduction impact claims are guaranteed, by using the AWARE disruptive physical tracer and blockchain technology. Save water and use genuine recycled fabrics. With the focus on water 2% of proceeds of each Impact product sold will be donated to Water.org. This portable 3 section auto open open mini umbrella is the perfect size to keep in your purse or car for a weather emergency. Metal frame, fibreglass ribs with ABS handle. This umbrella canopy has saved 4,6 litres of water is made of 7,7 PET bottles (500ml). Water savings are based on figures when compared to conventional fibre. This calculated indication is based on reliable LCA data as published by Textile Exchange in their Material Snapshots 2016.

WATER SAVED  
**4,6 L.**



P850.57 ●1 ●2 ○3 ●4 ●5

## 20.5" IMPACT AWARE™ RPET 190T PONGEE BAMBOO MINI UMBRELLA

No greenwashing, but telling a true story about sustainability! This Impact umbrella is made from 190T RPET pongee with AWARE™ tracer. With AWARE™, the use of genuine recycled fabric materials and water reduction impact claims are guaranteed, by using the AWARE disruptive physical tracer and blockchain technology. Save water and use genuine recycled fabrics. With the focus on water 2% of proceeds of each Impact product sold will be donated to Water.org. This portable 3 section manual open mini umbrella is the perfect size to keep in your purse or car for a weather emergency. Metal frame, metal ribs with beautiful bamboo handle. This umbrella canopy has saved 4,5 litres of water is made of 7,6 PET bottles (500ml). Water savings are based on figures when compared to conventional fibre. This calculated indication is based on reliable LCA data as published by Textile Exchange in their Material Snapshots 2016.

WATER SAVED  
**4,5 L.**



P850.61 ●1 ●2 ○3 ●4 ●5

## 21" IMPACT AWARE™ RPET 190T BAMBOO AUTO OPEN/CLOSE UMBRELLA

No greenwashing, but telling a true story about sustainability! This Impact umbrella is made with 190T RPET pongee with AWARE™ tracer. With AWARE™, the use of genuine recycled fabric materials and water reduction impact claims are guaranteed, by using the AWARE disruptive physical tracer and blockchain technology. Save water and use genuine recycled fabrics. With the focus on water 2% of proceeds of each Impact product sold will be donated to Water.org. This automatic umbrella opens and closes with the touch of a button to keep you dry in any weather. Metal frame, fibreglass ribs with beautiful bamboo handle. Stormproof. This umbrella canopy has saved 4,5 litres of water and is made of 7,5 PET bottles (500ml). Water savings are based on figures when compared to conventional fibre. This calculated indication is based on reliable LCA data as published by Textile Exchange in their Material Snapshots 2016.

WATER SAVED  
**4,5 L.**

All of these products can be branded with your logo!



P850.65 ●1 ●2 ○3 ●4 ●5

## 23" IMPACT AWARE™ RPET 190T AUTO OPEN BAMBOO UMBRELLA

No greenwashing, but telling a true story about sustainability! This Impact umbrella is made with 190T RPET pongee with AWARE™ tracer. With AWARE™, the use of genuine recycled fabric materials and water reduction impact claims are guaranteed, by using the AWARE disruptive physical tracer and blockchain technology. Save water and use genuine recycled fabrics. With the focus on water 2% of proceeds of each Impact product sold will be donated to Water.org. When rain and heavy winds approach, this 23-inch auto open umbrella lets you stay dry and comfortable. Metal frame, fibreglass ribs and stylish bamboo handle. This umbrella canopy has saved 4,9 litres of water and is made of 8,2 PET bottles (500ml). Water savings are based on figures when compared to conventional fibre. This calculated indication is based on reliable LCA data as published by Textile Exchange in their Material Snapshots 2016.

WATER SAVED

4,9 L.



P850.66 ●1 ●2 ○3 ●4 ●5

## 27" IMPACT AWARE™ RPET 190T AUTO OPEN BAMBOO UMBRELLA

No greenwashing, but telling a true story about sustainability! This Impact umbrella is made with 190T RPET pongee with AWARE™ tracer. With AWARE™, the use of genuine recycled fabric materials and water reduction impact claims are guaranteed, by using the AWARE disruptive physical tracer and blockchain technology. Save water and use genuine recycled fabrics. With the focus on water 2% of proceeds of each Impact product sold will be donated to Water.org. This large 27-inch auto open umbrella will shield you from the rain no matter where you are. Metal frame, fibreglass ribs and stylish bamboo handle. This umbrella canopy has saved 6,3 litres of water and is made of 10,7 PET bottles (500ml). Water savings are based on figures when compared to conventional fibre. This calculated indication is based on reliable LCA data as published by Textile Exchange in their Material Snapshots 2016.

WATER SAVED

6,3 L.





P850.60 ●1 ●2 ○3 ●4 ●5

## 21" IMPACT AWARE™ RPET 190T AUTO OPEN/CLOSE UMBRELLA

No greenwashing, but telling a true story about sustainability! This Impact umbrella is made with 190T RPET pongee with AWARE™ tracer. With AWARE™, the use of genuine recycled fabric materials and water reduction impact claims are guaranteed, by using the AWARE disruptive physical tracer and blockchain technology. Save water and use genuine recycled fabrics. With the focus on water 2% of proceeds of each Impact product sold will be donated to Water.org. This automatic umbrella opens and closes with the touch of a button to keep you dry in any weather. Metal frame, fibreglass ribs with ABS handle. Stormproof. This umbrella canopy has saved 4,3 litres of water and is made of 7,3 PET bottles (500ml). Water savings are based on figures when compared to conventional fibre. This calculated indication is based on reliable LCA data as published by Textile Exchange in their Material Snapshots 2016.

WATER SAVED

4,3 L.



P850.59 ●1 ●2 ○3 ●4 ●5

## 21" IMPACT AWARE™ RPET 190T MINI AUTO OPEN UMBRELLA

No greenwashing, but telling a true story about sustainability! This Impact umbrella is made with 190T RPET pongee with AWARE™ tracer. With AWARE™, the use of genuine recycled fabric materials and water reduction impact claims are guaranteed, by using the AWARE disruptive physical tracer and blockchain technology. Save water and use genuine recycled fabrics. With the focus on water 2% of proceeds of each Impact product sold will be donated to Water.org. Stay fashionable and dry with this 3 section auto open umbrella that opens at the touch of a button and features a compact design that fits perfectly in a purse or tote. Metal frame, fibreglass ribs with ABS handle. Stormproof. This umbrella canopy has saved 4,6 litres of water and is made with 7,7 PET bottles (500ml). Water savings are based on figures when compared to conventional fibre. This calculated indication is based on reliable LCA data as published by Textile Exchange in their Material Snapshots 2016.

WATER SAVED

4,6 L.

All of these products can be branded with your logo!



**MADE WITH  
7.1 PET BOTTLES**



P850.58 ●0 ●1 ●2 ○3 ●4 ●5 ●7

## 20.5" IMPACT AWARE™ RPET 190T MINI UMBRELLA

No greenwashing, but telling a true story about sustainability! This Impact umbrella is made with 190T RPET pongee with AWARE™ tracer. With AWARE™, the use of genuine recycled fabric materials and water reduction impact claims are guaranteed, by using the AWARE disruptive physical tracer and blockchain technology. Save water and use genuine recycled fabrics. With the focus on water 2% of proceeds of each Impact product sold will be donated to Water.org. This portable 3 section manual open mini umbrella is the perfect size to keep in your purse or car for a weather emergency. Metal frame, metal ribs with PP handle. This umbrella canopy has saved 4,2 litres of water and is made with 7,1 PET bottles (500ml). Water savings are based on figures when compared to conventional fibre. This calculated indication is based on reliable LCA data as published by Textile Exchange in their Material Snapshots 2016.

WATER SAVED  
**4,2 L.**



P850.64 ●0 ●1 ●2 ○3 ●4 ●5 ●7

## 23" IMPACT AWARE™ RPET 190T STANDARD AUTO OPEN UMBRELLA

No greenwashing, but telling a true story about sustainability! This Impact umbrella is made with 190T RPET pongee with AWARE™ tracer. With AWARE™, the use of genuine recycled fabric materials and water reduction impact claims are guaranteed, by using the AWARE disruptive physical tracer and blockchain technology. Save water and use genuine recycled fabrics. With the focus on water 2% of proceeds of each Impact product sold will be donated to Water.org. When rain and heavy winds approach, this 23-inch auto open umbrella lets you stay dry and comfortable. Metal frame, fibreglass ribs and PP handle. This umbrella canopy has saved 4,9 litres of water and is made of 8,2 PET bottles (500ml). Water savings are based on figures when compared to conventional fibre. This calculated indication is based on reliable LCA data as published by Textile Exchange in their Material Snapshots 2016.

WATER SAVED  
4,9 L.



P850.63 ●2 ●4 ●5

## 23" IMPACT AWARE™ RPET 190T REVERSIBLE UMBRELLA

No greenwashing, but telling a true story about sustainability! This Impact umbrella is made with 190T RPET pongee with AWARE™ tracer. With AWARE™, the use of genuine recycled fabric materials and water reduction impact claims are guaranteed, by using the AWARE disruptive physical tracer and blockchain technology. Save water and use genuine recycled fabrics. With the focus on water 2% of proceeds of each Impact product sold will be donated to Water.org. This innovative manual open umbrella with reverse open technology keeps you warm and dry. Fibreglass frame, fibreglass ribs and PP handle. Stormproof. This umbrella canopy has saved 8,8 litres of water and is made of 14,9 PET bottles (500ml). Water savings are based on figures when compared to conventional fibre. This calculated indication is based on reliable LCA data as published by Textile Exchange in their Material Snapshots 2016.

WATER SAVED  
8,8 L.

All of these products can be branded with your logo!



P850.62 ●1 ●2 ○3 ●4 ●5 ●7

## 23" IMPACT AWARE™ RPET 190T STORM PROOF UMBRELLA

No greenwashing, but telling a true story about sustainability! This Impact umbrella is made with 190T RPET pongee with AWARE™ tracer. With AWARE™, the use of genuine recycled fabric materials and water reduction impact claims are guaranteed, by using the AWARE disruptive physical tracer and blockchain technology. Save water and use genuine recycled fabrics. With the focus on water 2% of proceeds of each Impact product sold will be donated to Water.org. When rain and heavy winds approach, this 23-inch stormproof manual open umbrella lets you stay dry and comfortable. Fibreglass frame, fibreglass ribs and EVA handle. This umbrella canopy has saved 4,5 litres of water and is made of 7,5 PET bottles (500ml). Water savings are based on figures when compared to conventional fibre. This calculated indication is based on reliable LCA data as published by Textile Exchange in their Material Snapshots 2016.

WATER SAVED  
4,5 L.



P850.67 ●2 ●5

## 27" IMPACT AWARE™ RPET 190T DUAL COLOUR AUTO OPEN UMBRELLA

No greenwashing, but telling a true story about sustainability! This Impact umbrella is made with 190T RPET pongee with AWARE™ tracer. With AWARE™, the use of genuine recycled fabric materials and water reduction impact claims are guaranteed, by using the AWARE disruptive physical tracer and blockchain technology. Save water and use genuine recycled fabrics. With the focus on water 2% of proceeds of each Impact product sold will be donated to Water.org. This large 27-inch auto open umbrella with unique two colour design will shield you from the rain no matter where you are. Metal frame, fibreglass ribs and PP handle. This umbrella canopy has saved 6,3 litres of water and is made of 10,7 PET bottles (500ml). Water savings are based on figures when compared to conventional fibre. This calculated indication is based on reliable LCA data as published by Textile Exchange in their Material Snapshots 2016.

WATER SAVED  
6,3 L.



# AWARE

## **AWARE™ Recycled Polyester**

Wasted PET water bottles are turned into new polyester yarns and fabrics. Sustainable yarns and fabrics made from recycled polyester, which are extracted from post-consumed plastic bottles instead of petroleum.

Not only to reduce the petroleum consumption, but also to turn-off the plastic tap. Our effort to stop plastic waste from entering the ocean.

Source: [wearaware.co](http://wearaware.co)



All of these products can be branded with your logo!

**Geiger**  
Brandspiration.



P850.69 ●1 ●2 ○3 ●4 ●5 ●7

## 30" IMPACT AWARE™ RPET 190T STORM PROOF UMBRELLA

No greenwashing, but telling a true story about sustainability! This Impact umbrella is made with 190T RPET pongee with AWARE™ tracer. With AWARE™, the use of genuine recycled fabric materials and water reduction impact claims are guaranteed, by using the AWARE disruptive physical tracer and blockchain technology. Save water and use genuine recycled fabrics. With the focus on water 2% of proceeds of each Impact product sold will be donated to Water.org. The strongest rainstorm is no match for this 30 inch manual umbrella. It features a comfortable EVA grip handle and fibreglass frame and ribs for strength. Stormproof. This umbrella canopy has saved 7 litres of water and is made of 11,8 PET bottles (500ml). Water savings are based on figures when compared to conventional fiber. This calculated indication is based on reliable LCA data as published by Textile Exchange in their Material Snapshots 2016.

WATER SAVED  
7 L.



P850.68 ●2 ●4 ●5

## 27" IMPACT AWARE™ RPET 190T AUTO OPEN STORMPROOF UMBRELLA

No greenwashing, but telling a true story about sustainability! This Impact umbrella is made with 190T RPET pongee with AWARE™ tracer. With AWARE™, the use of genuine recycled fabric materials and water reduction impact claims are guaranteed, by using the AWARE disruptive physical tracer and blockchain technology. Save water and use genuine recycled fabrics. With the focus on water 2% of proceeds of each Impact product sold will be donated to Water.org. This large 27-inch auto open umbrella with unique two colour design will shield you from the rain no matter where you are. Metal frame, fibreglass ribs and PP handle. Stormproof. This umbrella canopy has saved 6,7 litres of water and is made of 11,3 PET bottles (500ml). Water savings are based on figures when compared to conventional fibre. This calculated indication is based on reliable LCA data as published by Textile Exchange in their Material Snapshots 2016.

WATER SAVED  
6,7 L.

**E:** [uksales@geiger.com](mailto:uksales@geiger.com)  
**T:** +44 (0)20 8569 2250



BTC House | 9 Millington Road | Hayes | Middx | UB3 4AZ